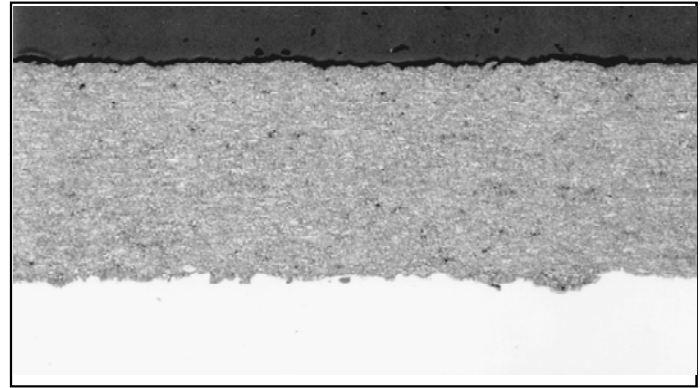


**Material** : Thermal Spray Coating, Plasma Coatings

**Method No.** :

**Results**

Ceremic layers (brittle &/or thin layer).



Magnification: 100X

Etching:

**Preparation Method:**

**Cutting:** Abrasive Cut-off machine with Metlab RC-35 Abrasive wheel (Diamond Wheel)

**Mounting:** Metlab Epoxy

**Mechanical Preparation:** FORCIPOL Grinding / Polishing Machine + FORCIMAT Automatic Specimen Mover.

Steps	Surface	Abrasive	Lubricant	Force per Sample, (N)/(PSI)	Time min.	Disc Speed, rpm	Relative Rotation
1	Piano	220 Grit	Water	25/5	2 min. or until plane	300	Contra
2	DP-Plan	9 $\mu$	Blue Lube	25/5	4	150	Contra
3	Pan-W	6 $\mu$	Blue Lube	25/5	4	150	Contra
4	Dia-Dac	3 $\mu$ Diamond Suspension	Blue Lube	15/3	3	150	Contra
5	Chem-Pad	OP-S 0.04 $\mu$		15/3	1	150	Contra

**FOR MORE DETAILED INFORMATION PLEASE REFER TO METLAB PRICE LIST**