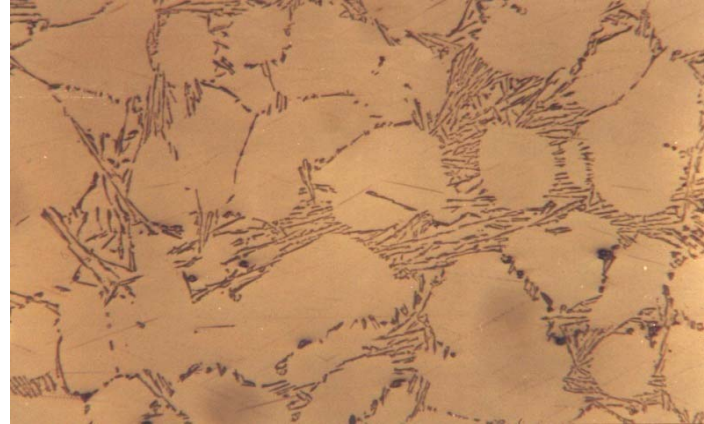


**Material** : A-356 Al-Si Cast Alloy

**Method No.** : C01

**Results**

This alloy is a commonly used engineering material. The microstructure consists of aluminium rich primary solid solution region and eutectic.



**Hypoeutectic A356 Alloy, Brightfield**  
 Magnification: 125X Etching: 10gr. NaOH+100ml H<sub>2</sub>O

**Preparation Method:**

**Cutting:** Abrasive Cut-off machine with Metlab Abrasive Wheels Non-Ferrous

**Mounting:** Mounting Press with Phenolic Powder

**Mechanical Preparation:** FORCIPOL Grinding / Polishing Machine + FORCIMAT Automatic Specimen Mover.

Steps	Surface	Abrasive	Lubricant	Force per Sample, (N)/(PSI)	Time min.	Disc Speed, rpm	Relative Rotation
1	PIANO	YELLOW	Water	25/5	1	250	Contra
2	PIANO	BLUE	Water	25/5	1	300	Contra
3	Dac Cloth	3µ Diamond Suspension	Blue Lube	15/3	4	150	Contra
4	Metlab Cloth	1µ Diamond Suspension	Blue Lube	15/3	1	150	Contra

**FOR MORE DETAILED INFORMATION PLEASE REFER TO METLAB PRICE LIST**