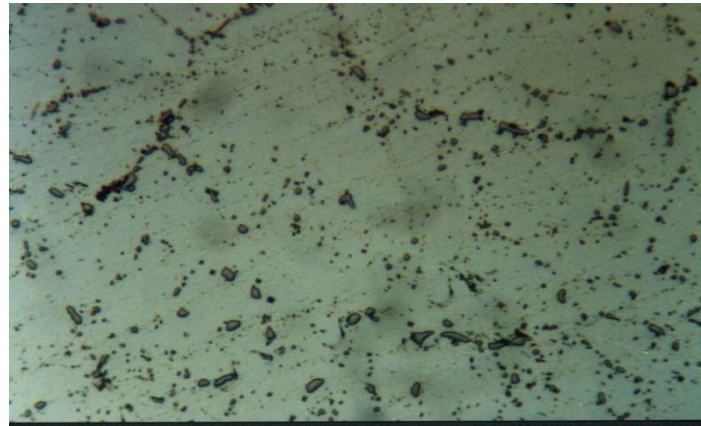


**Material** : AA8011 Aluminium Alloy

**Method No.** : C03

## Results

The microstructure of wrought aluminium alloy containing low silicon and iron consists of intermetallic phases (dark areas) in aluminium matrix.



**AA 8011 Aluminium Alloy, Brightfield**

Magnification: 800X

Etching: 10gr. NaOH+100ml H<sub>2</sub>O

## Preparation Method:

**Cutting:** Abrasive Cut-off machine with Metlab Abrasive Wheels

**Mounting:** Mounting Press with Lucite

**Mechanical Preparation:** FORCIPOL Grinding / Polishing Machine + FORCIMAT Automatic Specimen Mover.

Steps	Surface	Abrasive	Lubricant	Force per Sample, (N)/(PSI)	Time min.	Disc Speed, rpm	Relative Rotation
1	PIANO	YELLOW	Water	25/5	1	250	Contra
2	PIANO	BLUE	Water	25/5	1	300	Contra
3	Dac Cloth	3 $\mu$ Diamond Suspension	Blue Lube	15/3	4	150	Contra
4	Metlab Cloth	1 $\mu$ Diamond Suspension	Blue Lube	15/3	1	150	Contra

**FOR MORE DETAILED INFORMATION PLEASE REFER TO METLAB PRICE LIST**