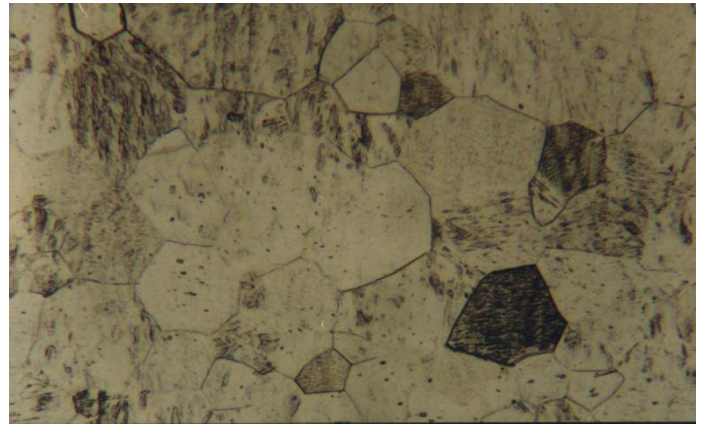


**Material** : Commercial Pure Titanium

**Method No.** : G02

## Results

Microstructure consists of grains having equal axis. Since the material is soft, low sample forces should be applied during mechanical preparations.



**Commercial Pure Titanium, Brightfield**  
Magnification: 270X Etching: Kroll solution

## Preparation Method:

**Cutting:** Abrasive Cut-off machine with Metlab Abrasive Wheels

**Mounting:** Mounting Press with Phenolic Powder

**Mechanical Preparation:** FORCIPOL Grinding / Polishing Machine + FORCIMAT Automatic Specimen Mover.

Steps	Surface	Abrasive	Lubricant	Force per Sample, (N)/(PSI)	Time min.	Disc Speed, rpm	Relative Rotation
1	PIANO	YELLOW	Water	25/5	1	250	Contra
2	PIANO	BLUE	Water	25/5	1	300	Contra
3	Dac Cloth	3 $\mu$ Diamond Suspension	Blue Lube	15/3	4	150	Contra
4	Metlab Cloth	1 $\mu$ Diamond Suspension	Blue Lube	15/3	1	150	Contra

**FOR MORE DETAILED INFORMATION PLEASE REFER TO METLAB PRICE LIST**