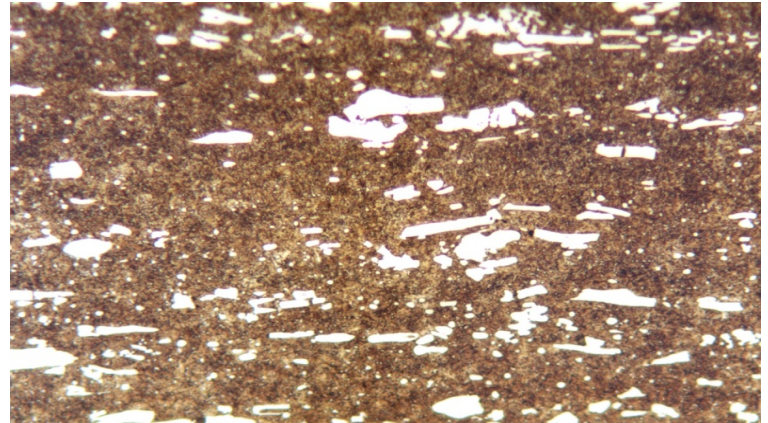


Material : AISI D2 Cold Work Tool Steel

Method No. : A08

Results

AISI D2 has high hardness value and high wear resistance due to its high content of chromium and carbon. Since there are many primary alloy carbides, a careful sample preparation is required. Long preparation time and overetching should be avoided. Below given procedure prevents edge roundness.



D2 Cold Work Tool Steel
Magnification: 180X Etching: Picral
10%

Preparation Method:

- Cutting:** Abrasive Cut-off machine with Metlab Diamond Metal Bonded Wheel
- Mounting:** Mounting Press with Black Epoxy
- Mechanical Preparation:** FORCIPOL Grinding / Polishing Machine + FORCIMAT Automatic Specimen Mover.

Steps	Surface	Abrasive	Lubricant	Force per Sample, (N)/(PSI)	Time min.	Disc Speed, rpm	Relative Rotation
1	S/C Paper Disc	180 Grit	Water	30/6	2 min. or until plane	300	Contra
2	S/C Paper Disc	400 Grit	Water	25/5	2	250	Contra
3	S/C Paper Disc	800 Grit	Water	25/5	2	250	Contra
4	Plan Cloth	6 μ Diamond Suspension	Blue Lube	15/3	3	150	Contra
5	Mol Cloth	1 μ Diamond Suspension	Blue Lube	15/3	3	150	Contra

FOR MORE DETAILED INFORMATION PLEASE REFER TO METLAB PRICE LIST