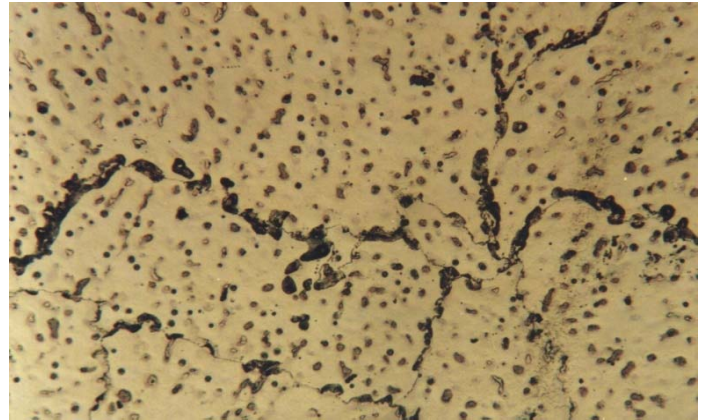


Material : Mg-9Al (Magnesium Alloy)

Method No. : G01

Results

In this cast structure, the segregation can easily be seen. Eutectic area (dark) are located in grain boundaries.



Mg-9Al Magnesium Alloy, Brightfield
 Magnification: 90X
 Etching: 40ml ethanol + 10ml HNO₃

Preparation Method:

Cutting: Abrasive Cut-off machine with Metlab Abrasive Wheels

Mounting: Mounting Press with Phenolic Powder

Mechanical Preparation: FORCIPOL Grinding / Polishing Machine + FORCIMAT Automatic Specimen Mover.

Steps	Surface	Abrasive	Lubricant	Force per Sample, (N)/(PSI)	Time min.	Disc Speed, rpm	Relative Rotation
1	PIANO	YELLOW	Water	25/5	1	250	Contra
2	PIANO	BLUE	Water	25/5	1	300	Contra
3	Dac Cloth	3μ Diamond Suspension	Blue Lube	15/3	4	150	Contra
4	Metlab Cloth	1μ Diamond Suspension	Blue Lube	15/3	1	150	Contra

FOR MORE DETAILED INFORMATION PLEASE REFER TO METLAB PRICE LIST