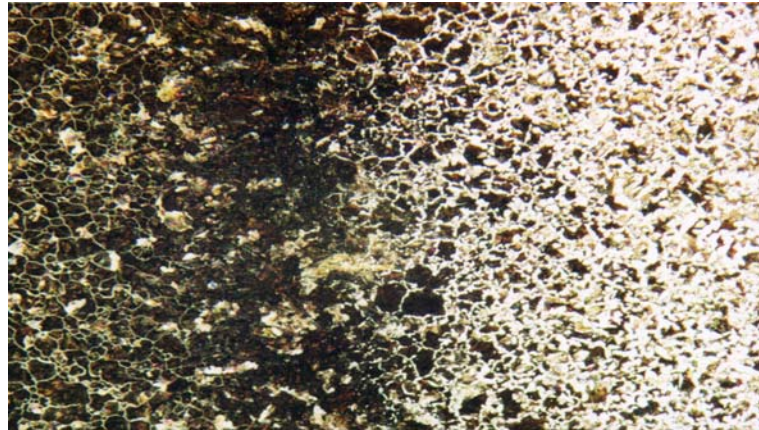


Material : Steel, case hardenable

Method No. : A04

Results

Equilibrium phases of carburizing region are seen obviously from surface towards inner areas. Carburizing region is thicker than 2 mm. Below given preparation method gives ideal results.



Case hardenable Steel, Brightfield
Magnification: 25X Etching: 2% Nital

Preparation Method:

Cutting: Abrasive Cut-off machine with Metlab RC-50+ Abrasive wheel

Mounting: Mounting Press with Phenolic Powder or Black Epoxy

Mechanical Preparation: FORCIPOL Grinding / Polishing Machine + FORCIMAT Automatic Specimen Mover.

Steps	Surface	Abrasive	Lubricant	Force per Sample, (N)/(PSI)	Time min.	Disc Speed, rpm	Relative Rotation
1	S/C Paper Disc	180 Grit	Water	30/6	2 min. or until plane	300	Contra
2	S/C Paper Disc	400 Grit	Water	30/6	2	300	Contra
3	S/C Paper Disc	800 Grit	Water	30/6	2	300	Contra
4	Plus Cloth	6 μ Diamond Suspension	Blue Lube	25/5	3	200	Contra
5	Metlab Cloth	1 μ Diamond Suspension	Blue Lube	20/4	3	150	Contra

FOR MORE DETAILED INFORMATION PLEASE REFER TO METLAB PRICE LIST