

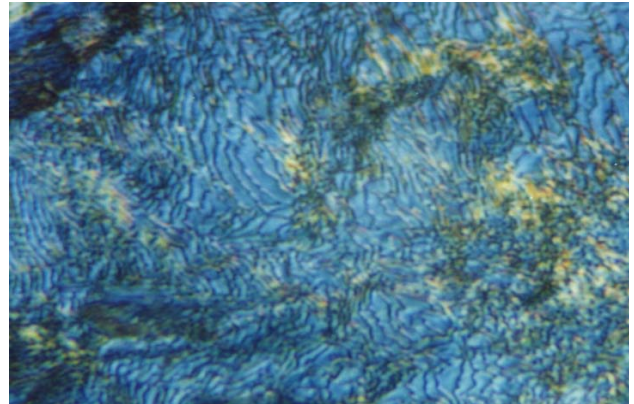
Material : Steel, Pearlitic

Micrologue

Method No. : A03

Results :

Pearlitic steels are usually quenched and tempered. Microstructure is completely pearlitic. In high magnifications pearlitic constituents are observed.



Pearlitic structure

Magnification: 1600X

Etching: 3%

Preparation Method:

Cutting: Abrasive Cut-off machine with Metlab RC-35-50 Abrasive Wheels

Mounting: Mounting Press with Black Epoxy

Mechanical Preparation: FORCIPOL Grinding / Polishing Machine + FORCIMAT Automatic Specimen Mover.

Parameter / Stage	Surface	Abrasive	Lubricant	Force per Sample, (N)/(PSI)	Time min.	Disc Speed, rpm
MP Step 1.	PIANO	YELLOW Diamond grinding	Water	25/5	1	250
MP Step 2.	PIANO	BLUE Diamond grinding	Water	25/5	1	300
MP Step 3.	DAC CLOTH	3 μ Diamond Suspension	Blue Lube	15/3	4	150
Final Polishing	METLAB CLOTH	1 μ Diamond Suspension	Blue Lube	15/3	1	150

Etching: 3% Nital

**FOR MORE DETAILED INFORMATION
PLEASE REFER TO METLAB PRICE LIST**





% Nital

Relative Rotation
Contra
Contra
Contra
Contra