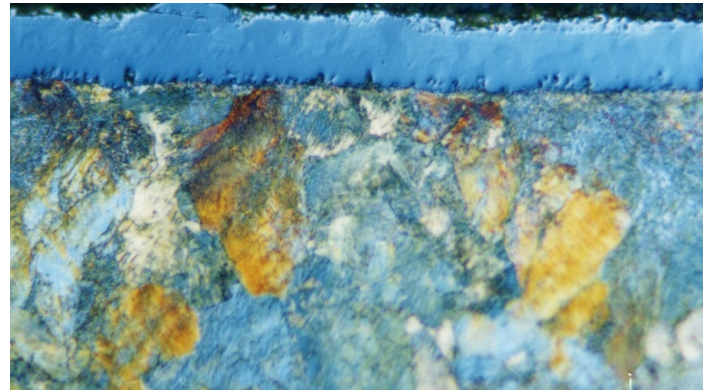


Material : TiC Coating

Method No. : H01

Results

Single layer titanium carbide coating deposited on pearlitic low alloy steel through a thermochemical process. The thickness is approx. 10 microns and hardness is around 2500 kg/mm². Careful low feed cutting recommended. Edge effects should be avoided.



TiC Coating on Pearlitic Steel
Magnification: 875X Etching: 3% Nital

Preparation Method:

Cutting: Abrasive Cut-off machine with Metlab RC50-60 Abrasive Wheels

Mounting: Mounting Press with Diallyl Phthalate

Mechanical Preparation: FORCIPOL Grinding / Polishing Machine + FORCIMAT Automatic Specimen Mover.

Steps	Surface	Abrasive	Lubricant	Force per Sample, (N)/(PSI)	Time min.	Disc Speed, rpm	Relative Rotation
1	PIANO	YELLOW	Water	25/5	1	250	Contra
2	PIANO	BLUE	Water	25/5	1	300	Contra
3	Dac Cloth	3 μ Diamond Suspension	Blue Lube	15/3	4	150	Contra
4	Metlab Cloth	1 μ Diamond Suspension	Blue Lube	15/3	1	150	Contra

FOR MORE DETAILED INFORMATION PLEASE REFER TO METLAB PRICE LIST