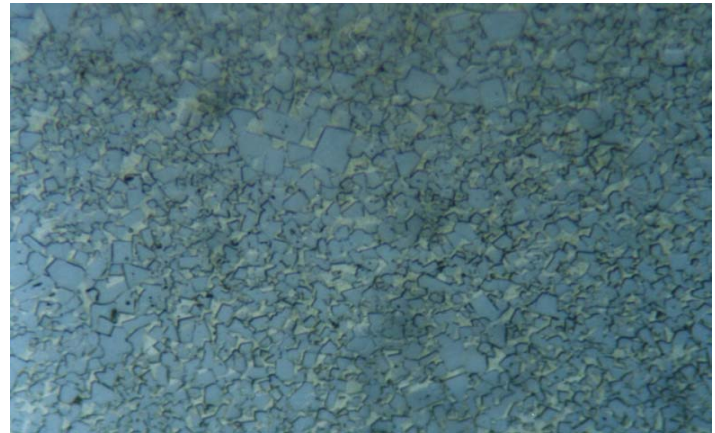


Material : WC-Co Powder Metal

Method No. : I01

Results

Regularly shaped WC particles can easily be seen in the microstructure of this cermet sample containing %80 - 97 WC (+TiC) and Co. Diamond grinding pads can also be used for grinding process. After etching, potassium permanganate solution helps to obtain attractive images.



WC-Co Sinter Metal, DIC
Magnification: 800X Etching: Murakami

Preparation Method:

Cutting: Abrasive Cut-off machine with Metlab Abrasive Wheels

Mounting: Mounting Press with Diallyl Phthalate

Mechanical Preparation: FORCIPOL Grinding / Polishing Machine + FORCIMAT Automatic Specimen Mover.

Steps	Surface	Abrasive	Lubricant	Force per Sample, (N)/(PSI)	Time min.	Disc Speed, rpm	Relative Rotation
1	PIANO	YELLOW	Water	25/5	1	250	Contra
2	PIANO	BLUE	Water	25/5	1	300	Contra
3	Dac Cloth	3 μ Diamond Suspension	Blue Lube	15/3	4	150	Contra
4	Metlab Cloth	1 μ Diamond Suspension	Blue Lube	15/3	1	150	Contra

FOR MORE DETAILED INFORMATION PLEASE REFER TO METLAB PRICE LIST