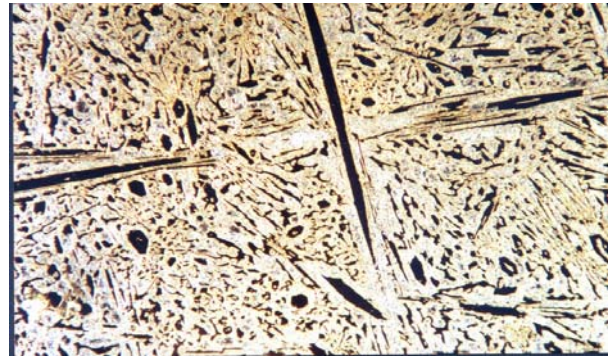


Material : White Cast Iron, alloyed

Method No. : B03

Results

The microstructure of high chromium white cast iron consists of alloy carbides (dark colour) and ledeburite. Hardness is around 600 kg/mm² and has high wear resistance. To prevent edge effects, epoxy type mounting material is recommended.



Chromium Alloyed White Cast Iron
Magnification: 100X Etching: Vilella

Preparation Method:

Cutting: Abrasive Cut-off machine with Metlab RC-30-50 Abrasive wheel

Mounting: Mounting Press with Phenolic Powder

Mechanical Preparation: FORCIPOL Grinding / Polishing Machine + FORCIMAT Automatic Specimen Mover.

Steps	Surface	Abrasive	Lubricant	Force per Sample, (N)/(PSI)	Time min.	Disc Speed, rpm	Relative Rotation
1	PIANO	YELLOW	Water	25/5	1	250	Contra
2	PIANO	BLUE	Water	25/5	1	300	Contra
4	Dac Cloth	3µ Diamond Suspension	Blue Lube	15/3	4	150	Contra
5	Metlab Cloth	1µ Diamond Suspension	Blue Lube	15/3	1	150	Contra

FOR MORE DETAILED INFORMATION PLEASE REFER TO METLAB PRICE LIST