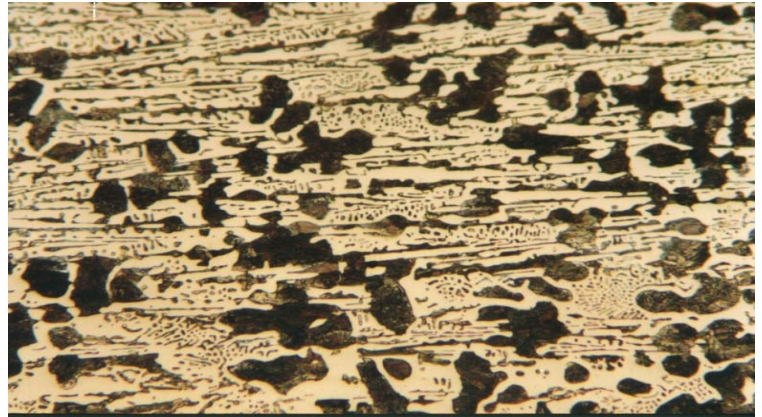


**Material** : White Cast Iron

**Method No.** : B02

## Results

The microstructure of white cast iron consists of Cementite, pearlite and ledeburite. Carbides in the microstructure increase the hardness and wear resistance.



**White Cast Iron, Brightfield**  
Magnification: 180X Etching: 3% Nital

## Preparation Method:

**Cutting:** Abrasive Cut-off machine with Metlab RC-35-50 Abrasive wheel

**Mounting:** Mounting Press with Phenolic Powder

**Mechanical Preparation:** FORCIPOL Grinding / Polishing Machine + FORCIMAT Automatic Specimen Mover.

Steps	Surface	Abrasive	Lubricant	Force per Sample, (N)/(PSI)	Time min.	Disc Speed, rpm	Relative Rotation
1	S/C Paper Disc	180 Grit	Water	25/5	2 min. or until plane	300	Contra
2	S/C Paper Disc	400 Grit	Water	25/5	2	300	Contra
3	S/C Paper Disc	800 Grit	Water	25/5	2	300	Contra
4	S/C Paper Disc	1200 Grit	Water	20/4	2	250	Contra
5	Velap Cloth	1 $\mu$ Alumina Suspension	Water	15/3	4	150	Contra

**FOR MORE DETAILED INFORMATION PLEASE REFER TO METLAB PRICE LIST**